

# Arphidium Internetwork RFID Appliance

## Benefits

---

- Lower Total Cost of Ownership (TCO)
- Scalable, manageable, and secure
- Separates IT from RFID
- Hot swappable, remotely configurable

## Deployment

---

- Preconfigurable, repeatable installation
- Operates immediately out-of-the-box
- GUI based remote configuration
- Simplifies RFID Installation

## Flexible

---

- Open APIs
- Java, .NET, Web services
- Operates standalone or under control
- Stackable, designed to operate with middleware systems
- Arphidium intelligent Reading (AiR)

## Interoperability

---

- Designed for speed, quickly integrate with existing applications
- Focus on features not RFID
- Applications can run remotely or on the appliance
- Oracle, MySQL, SQL Server

## Connectivity

---

- 10/100/1000 BaseT Ethernet
- CF Slot/Panel Console

## Networking

---

- TCP/IP
- AEM
- IPC
- Remoting
- RMI
- SOAP

## System Management

---

- SNMP
- Arphidium Management Console
- Front Panel

## Supported RFID Hardware

---

- FEIG
- Intermec
- Motorola Pocket PC
- RF Link
- Sirit
- Symbol
- Texas Instruments
- Zebra

# Arphidium

Enterprise RFID Application Platform

Arphidium Corporation

551 Commerce Blvd

Suite B

Upper Marlboro, Maryland 20774

USA

[1].301.390.0171

sales@arphidium.com

The RFID Ecosystem™

© Copyright MMVII : Arphidium Corp

# More than RFID

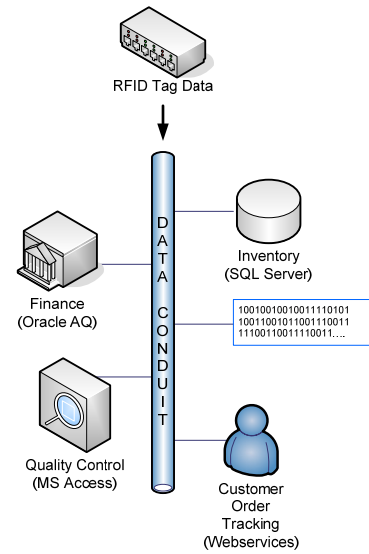
Optimized system design is the basis for robust, fast, and effective inventory management and tracking systems. Modern IT systems use a heterogeneous array of hardware and software. The success of your solution lies within the interaction of the readers, databases, and systems that manage workflow. Arphidium helps you design scalable solutions that utilize your existing IT assets with proven RFID data capture and delivery mechanisms.

## Enhance Your Vision

Support a wide range of RFID tag types, reader hardware, and RF networking in a unified appliance. Extend the range of your current reader infrastructure with RF Link and support up to 64 unique antenna locations with a single reader.

## No Limitations for Database Connectivity

A user-friendly connection wizard and support for the leading database vendors helps you deliver data to your backend systems with ease. Software Data Conduits automatically shuttle RFID data to various business processes.



## Plug-N-Play RFID

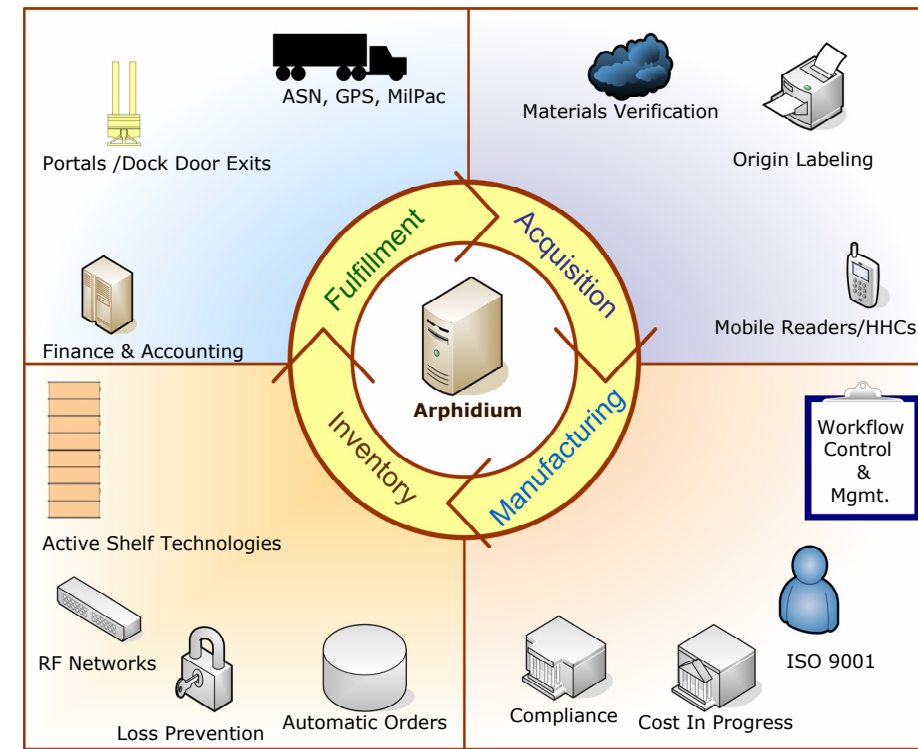
Strategically deploy Arphidium appliances in your network to centralize or distribute business intelligence according to your needs. Appliances can monitor separate segments of your enterprise or communicate with each other over the network.

## Any PC, Any OS, Any Standard

Through an open set of interfaces, Arphidium provides reader, RF, and labeling support in-process or across the network for Java, .NET, or Web service implemented environments.

# Enterprise Wide Control

Arphidium is the first application platform that can help you build a closed loop Auto-ID system. Use one or more appliances in concert with your inventory management and accounting systems to boost productivity and streamline operations.



*Your business consists of multiple processes and departments working together and relying on each other.*

*In order to survive in today's competitive environment, Manufacturing needs to know about Inventory; Accounting needs to know about Acquisition.*

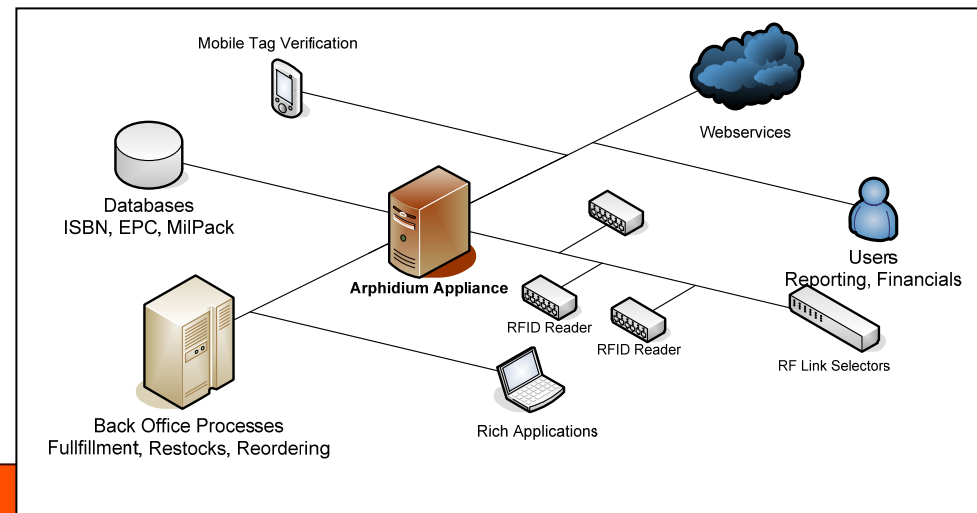
*Arphidium is a solution that meshes RFID with the rest of your business to form the 'RFID Ecosystem'.*

# Make RFID Real

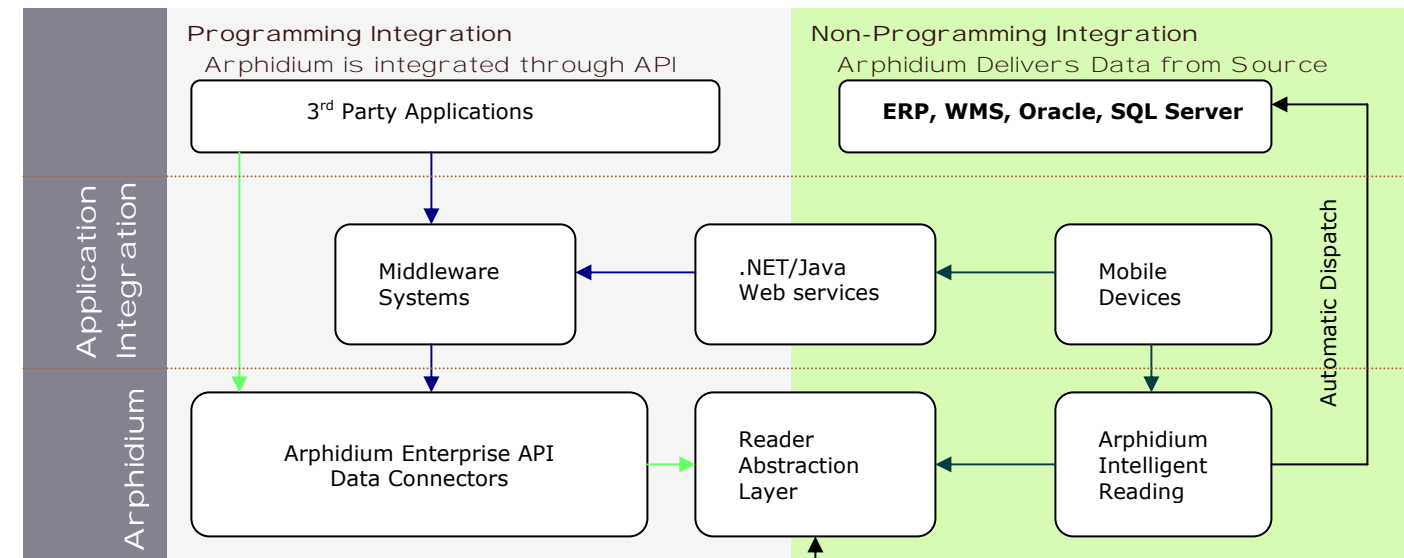
Are you looking for a reliable and easy-to-use solution to take advantage of RFID's automated processing capabilities? Take control of your data. Quickly integrate your applications with an expandable software architecture. Choose how your applications interact with readers, databases, and other systems through programmable interfaces you define.

## NOT Middleware

From the ground up, Arphidium was developed to build business applications. Some systems filter RFID with a closed architecture; others control readers but only deliver raw data. Arphidium provides tools that help you link RFID with the systems that run your business.

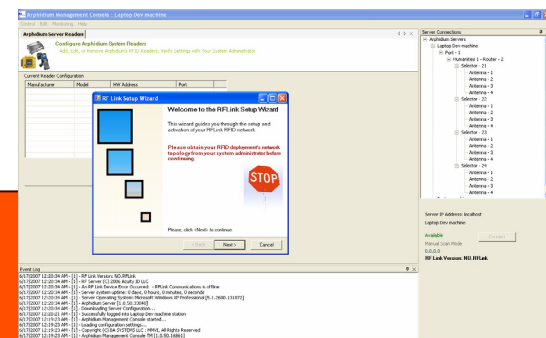


# Seamless Integration of External Systems



**Conceive, Connect, Control - Build your solution using your repertoire of best practices and architecture. Arphidium will scale as your sensing and reporting needs change.**

**Stop Building Science Projects - Arphidium significantly reduces implementation effort and time-to-deploy by linking raw data from multiple input sources to the most popular backend systems out of the box. Support for best-of-breed RFID, Barcode, and Sensor hardware is provided as delivered with the capability of adding new devices and services with the Enterprise API.**



**Arphidium Management Console - Use the AMC to manage multiple Arphidium appliance instances and their associated hardware and software. Arphidium is the only platform that supports RF Link Internetwork Equipment.**